

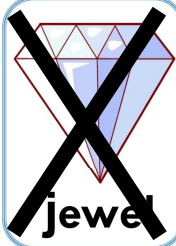
Name:

Date:

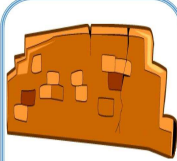
Three Times a Rhyme

B

Cross out the picture that does not rhyme with the other three pictures.



jewel



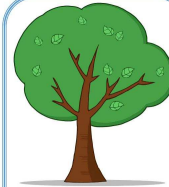
wall



pie



fly



tree



ten



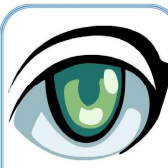
ball



crawl



ring



eye



key



tea



dart



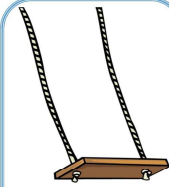
bat



cart



heart



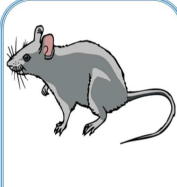
swing



tie



hat



rat



cat



chart



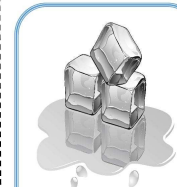
wing



sing



spice



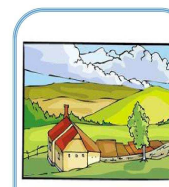
ice



shoe



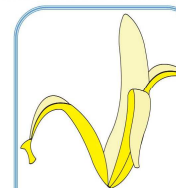
doll



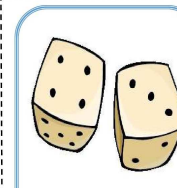
land



band



peel



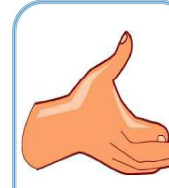
dice



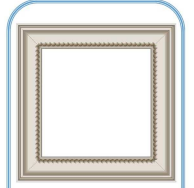
glue



zoo



hand



frame