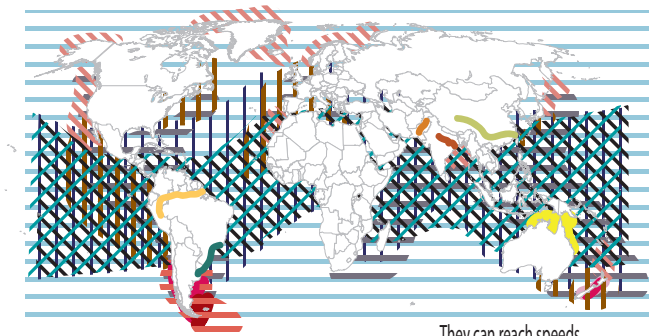


Dolphin

The dolphin is a cetacean marine mammal, which, like the whale, the sperm whale and the porpoise, is a vertebrate mammal that breathes through the lungs. The blowhole or hole at the top of its head enables it to breathe out of the water.

It is considered the smartest marine animal on the planet.

They are divided into two large families, the Delphinidae or Oceanic Dolphins with 34 species and the Platanistidae or River Dolphins with 5 species. The best known are:



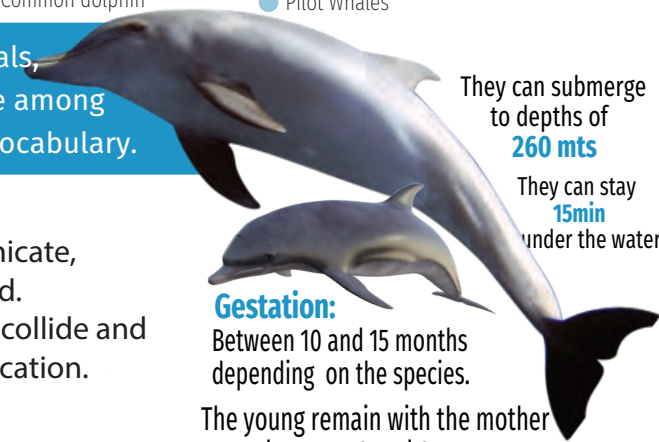
They can reach speeds over 30 kilometers per hour.

River Dolphins

- Ganges River Dolphin
- Indus river dolphin
- Amazon river dolphin
- Chinese river dolphin
- La Plata river dolphin

Oceanic Dolphins

- Gray dolphin
- Bottle nose dolphin.
- White-faced Dolphin
- Dark Dolphin
- Falkland Islands Dolphins.
- Common dolphin
- Killer whales
- Peale's dolphin
- Dolphin sarawak
- Pygmy Killer Whales
- Dolphins on the irrawaddy river
- Pilot Whales



They can submerge to depths of **260 mts**

They can stay **15min** under the water.

Gestation:

Between 10 and 15 months depending on the species.

The young remain with the mother between 3 and 8 years.

Intelligent Animal

They are very sociable animals, and are able to communicate among themselves using their own vocabulary.

Echolocation

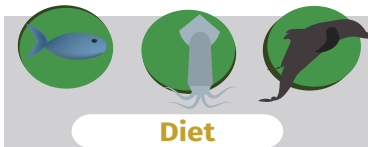
Dolphins use echolocation to communicate, to detect dangers and to find food.

They emit sound waves "sounds" that then collide and bounce back letting you know of its location.



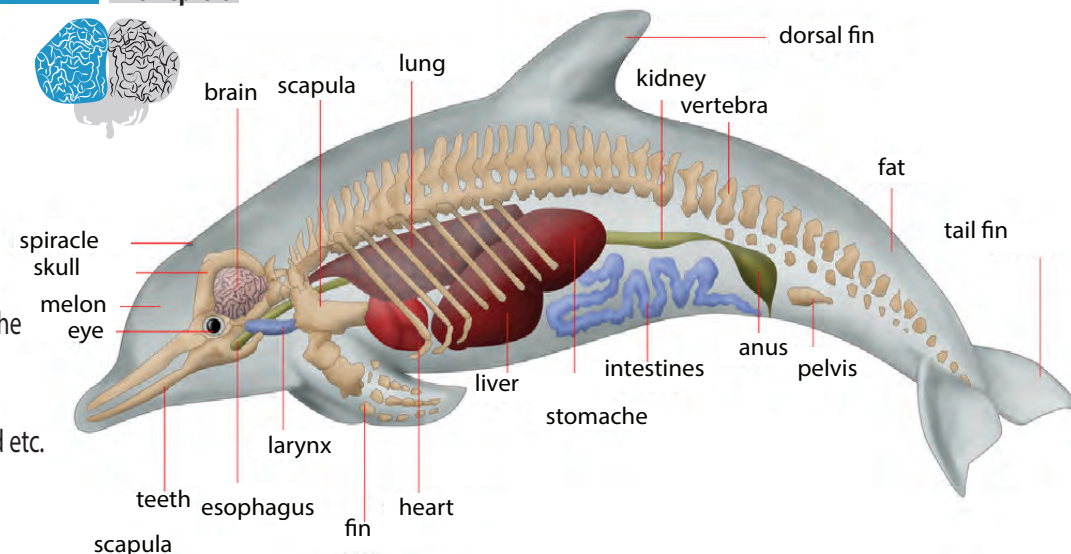
Only one side of their brain sleeps at a time. Keeping one eye open and one closed. They must be aware of their breathing. For this reason, they alternate their dreaming between the two hemispheres of the brain.

Left Hemisphere Right Hemisphere



Diet

At birth, for several months they exclusively feed on the milk provided by their mother. In adulthood their feeding is varied and they eat what is available in their environment, small fish, octopus, squid etc. They eat between 11-13 kilos of fish a day. Despite the fact that they have teeth, dolphins do not chew their food.



Is up to 6m long

Weighs up to **110 kg**

They do not use teeth to chew their food.

Have between 20 y 50 teeth.

All the teeth are the same.

River Dolphins have up to 106 teeth.

Their average lifespan is 17 years. But, can live up to 50 years.

