

# Beetle

Beetles, also known as roaches in some countries, are the largest group in the Animal Kingdom.

They are characterized by having a pair of hard wings that act as an exoskeleton to protect the soft membrane.

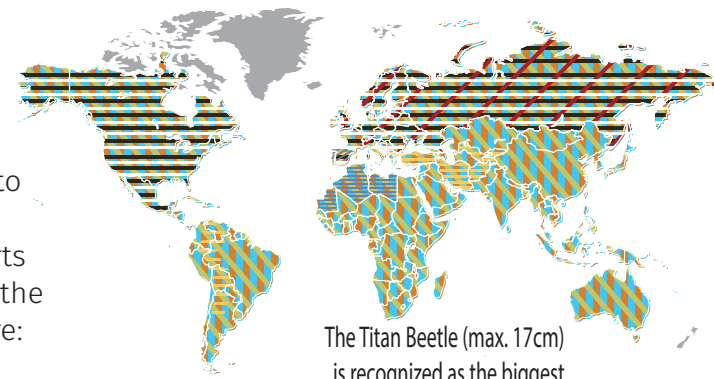


About **40%** of all insect species are beetles.

There are around **400,000 known beetle species**.

Having a great ability to adapt, it is possible to find them in many parts of the world. Some of the best known species are:

- Woodworm
- Carpet beetle
- Weevils
- Ladybug or singing
- Beetle clock of death
- Carraleja
- Country cycle
- Flying deer



The Titan Beetle (max. 17cm) is recognized as the biggest insect in the world.

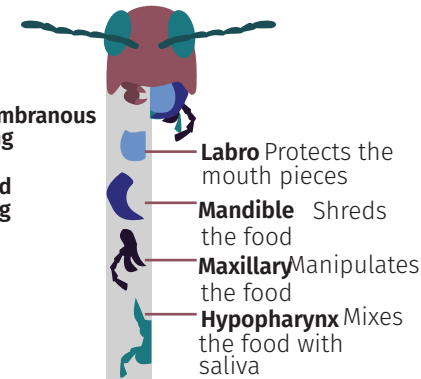
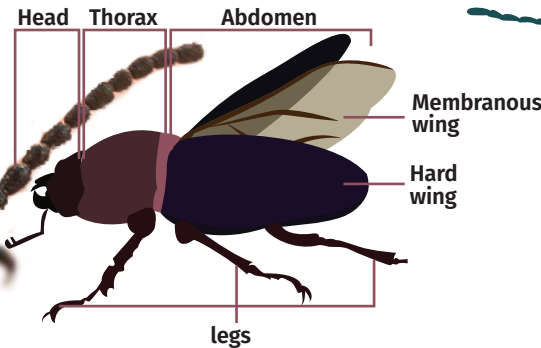
They **30%** of all animals

## Anatomy

Being **insects**, they have similar characteristics. Its body is divided into three parts, they have six legs, The African Goliath beetle is recognized as the largest insect in the world, a pair of antennae and wings..



Beetles have a chewing mouth mechanism, it is one of the most **primitive** and has had less adaptive modifications.



Its **exoskeleton** is made up of chitin and scleroproteins.

## Life Cycle

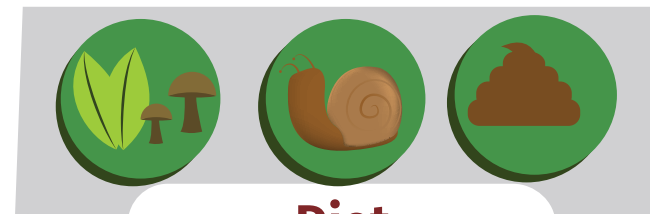
The smallest species **Measures** only a few millimeters

Up to **7,5cm** length



The time that the cycle from egg to adult lasts depends on the species, it can be a couple from months to 3 years.

The carralejas lay between two thousand and four thousand eggs, but very few actually develop and hatch.



## Diet

Although most beetle species consume plants and fungi, there are also those that feed on snails, dead animals, and even excrement.