

Bee

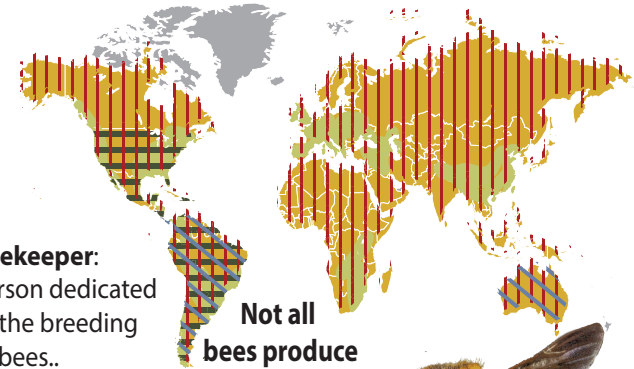
They are the largest pollinating insects in the world.
A third of all food eaten by humans is pollinated, mainly by bees.

They inhabit all continents of earth where there are flowers.

There are approximately 20,000 different types of bees.

- Honey bees
- Bumble bees
- Africanized Bee
- Lonely bees
- Nocturnal bees

Beekeeper:
 Person dedicated to the breeding of bees..



Not all bees produce honey.



The worker bees produce royal jelly.

The bees most commonly seen are the workers.

Only the females bite.
 By biting, they lose their stinger and they die.

Diet



They need nectar, pollen and water.

Bees collect pollen and nectar from which the entire colony feeds. The nectar is stored within its stomachs and then is passed from one worker to another until the water it contains causes the nectar to turn into honey. The honey is stored by the workers inside the hexagonal cells of the wax combs.

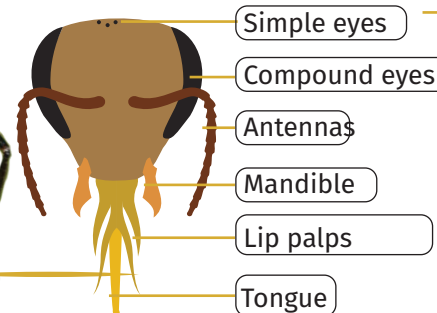
Water regulates temperature and dilutes the honey.

The Queen: The one who lays the eggs and maintains order. She can lay 1,600 to 3,000 eggs daily. There is only one queen for each colony. When she dies, the workers feed one of them with royal jelly to make her the new queen.

The Drones: They are the males. They are responsible for fertilizing the queen.

The Workers: They are the females. They look for the pollen and the nectar of the flowers. They build, clean and defend the hive.

Honey bees use their sense of vision to locate the flowers.



Simple eyes to see from a short distance, in the dark and inside the hive.
 Compound eyes are made up of thousands of simple hexagonal eyes.
They perceive blue, yellow, green and ultraviolet colors better, while they see red as black and confuse yellow and orange.

Hive:

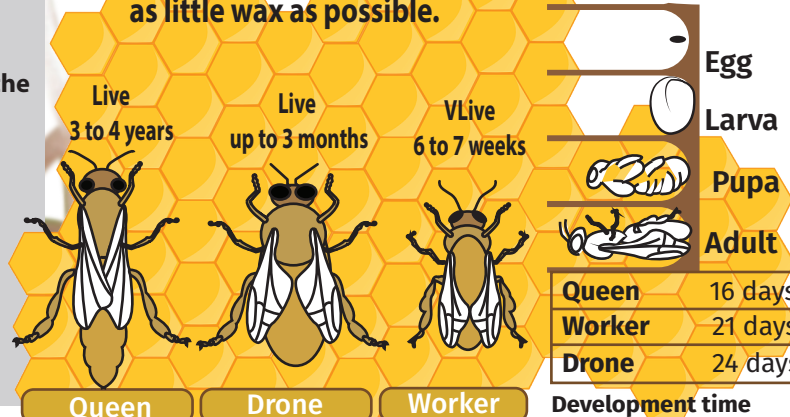
The place where a colony of bees of the same species live. Each colony can have up to 80,000 bees.

When the colony splits a swarm forms.

Swarm:

A set of bees in flight accompanied by a queen bee in search of a new place to establish a colony.

They choose the hexagonal figure to build the cells with the as little wax as possible.



Up to 39cm in length

The smallest species measures

2,1mm usually is confused with a fly.

The bees have the body covered in hair to which pollen sticks from the flowers.

They suck nectar from the flowers and store it in bags on their back legs to transport it to the Beehive.

This is how bees help with the pollination of the plants.