

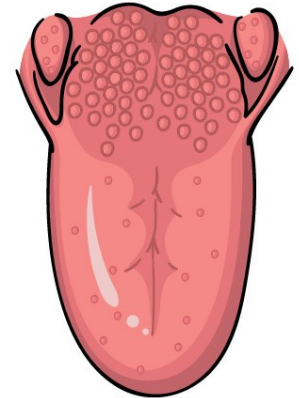
Name: _____



10 Minutes with Science

The Tongue

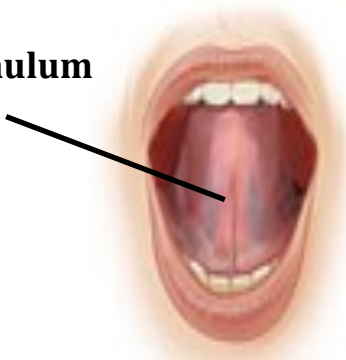
The tongue is a very flexible and mobile organ found inside the mouth. It has a triangular shape, a V or cone shape. It has two main surfaces, the top and the bottom. The top directly touches the palate, and the bottom touches the floor of the mouth. The tongue is made up of 17 muscles.



It can be classified into two major parts: the anterior and the posterior. The front part, the anterior, of the tongue has great mobility, and together with the teeth helps to produce many sounds. It also helps to swallow food, as it pushes it into the teeth to chew it.

The back, the posterior, also helps to produce certain sounds and helps to move the food to the throat so that it can be swallowed.

Frenulum



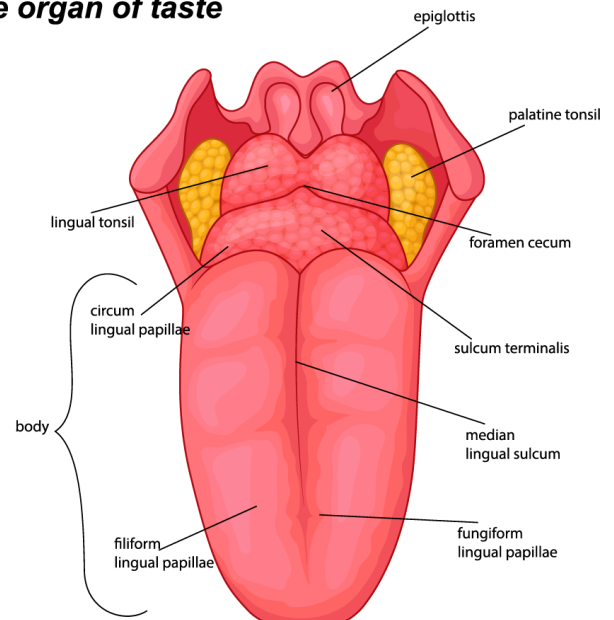
Another of the basic elements of the language is the frenulum. The frenulum is a membrane that joins the tongue with the inside of the mouth. It keeps the tongue in the same place so there is no risk that you will swallow it.

The tongue contains salivary glands, which are responsible for making saliva

that allows the mouth to always be moist. It is important that they work properly because they are very useful when eating food and speaking.

It also contains taste buds. These are small sensory organs shaped like tiny buttons. Because of them, we can differentiate the flavors of the foods we eat. The flavors are organized into four large groups: salty, sweet, sour and bitter. Each taste bud, papillae, has a kind of microscopic hair called cilia. They are very sensitive and when they perceive the taste of things, they send messages to the brain so that the person recognizes the flavors.

HUMAN TONGUE *the organ of taste*



Each person has approximately 10,000 taste buds. These change about every 15 days, depending on the age of the person. Older people tend to have fewer taste buds because they don't regenerate as quickly as in young people.

To have good tongue hygiene, it is necessary to rub it when you brush your teeth. It's also important to be careful when taking very hot foods as you might burn it and temporarily lose the ability to taste food.



Name: _____

ANSWER THE QUESTIONS

1. What does the tongue do?

- a. Chews ingested food
- b. Tastes food
- c. Pushes food into the brain
- d. Wets your teeth



2. What is the shape of the tongue and what is its main characteristic?

- a. It's shaped like a V and keeps you from swallowing it.
- b. It is cone-shaped and tastes different foods.
- c. It's circular in shape and makes saliva.
- d. It has a triangular shape and allows you smell different flavors.

3. Why do we need the tongue?

- a. We need to know the flavors of the smells.
- b. We need saliva and flavors.
- c. It allows us to differentiate the flavors, and produce sounds.
- d. All answers are incorrect.



4. Taste buds reproduce much more when you get old.

- a. True
- b. False



5. What do you need to do to take care of your tongue?

- a. Wash with soap and water and dry thoroughly.
- b. Drink plenty of water and sleep with your tongue out at night.
- c. Drink very hot or very cold liquids.
- d. All answers are incorrect.