

Name: _____

ANSWER THE QUESTIONS

1. During what period did the Tyrannosaurus rex live?

- a. the end of the Jurassic period
- b. the end of the Triassic period
- c. the end of the Cretaceous period
- d. none of the above



2. In what area of the world did the Tyrannosaurus rex live?

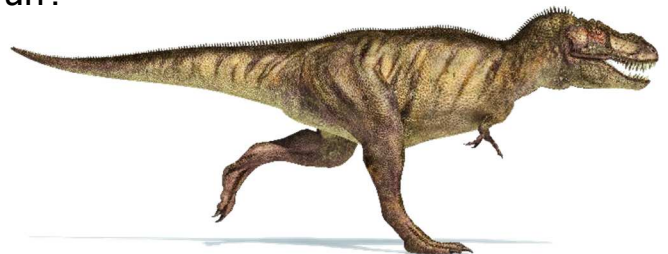
- a. east United States of America
- b. west United States of America
- c. west Cretaceous
- d. east Jurassic

3. How did the Tyrannosaurus balance the weight of its huge skull?

- a. with its two large and powerful hind legs
- b. with its small front legs
- c. with its 4-ton hips
- d. with its long, heavy tail

4. How fast could the Tyrannosaurus rex run?

- a. 10 kilometers per hour
- b. 20 kilometers per hour
- c. 30 kilometers per hour
- d. 40 kilometers per hour



5. Paleontologists debate whether the Tyrannosaurus rex was a hunter or if it fed on carrion.

- a. True
- b. False