

Name: \_\_\_\_\_

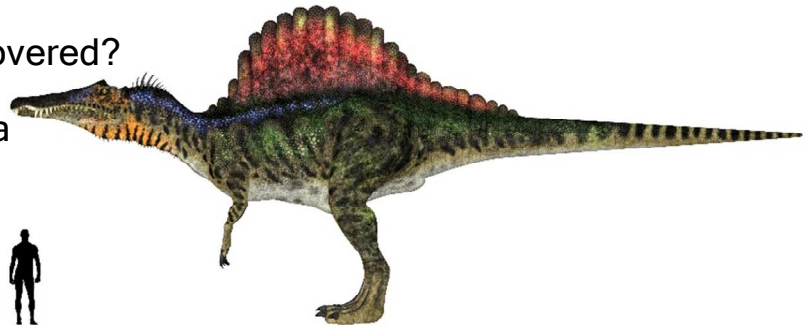
## ANSWER THE QUESTIONS

1. The Spinosaurus was bigger than \_\_\_\_\_.

- a. the Tyrannosaurus rex
- b. the human being
- c. the Giganotosaurus
- d. all the above

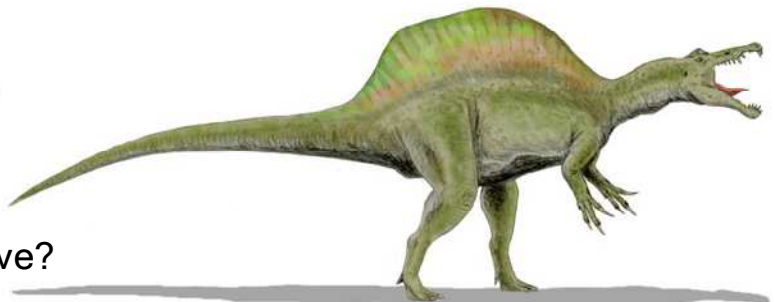
2. Where was Spinosaurus discovered?

- a. United States of America
- b. Egypt
- c. Europe
- d. Oceania



3. In what year were the bones of the Spinosaurus discovered?

- a. 1944
- b. 1925
- c. 1915
- d. 1912



4. Where did the Spinosaurus live?

- a. only on land
- b. only in the water
- c. both on land and in water
- d. it flew

5. Some paleontologists suggest that thorns were covered with fat and they formed a hump to store water or fat like that of camels.

- a. True
- b. False

